

1. Densoseal 16A - Sealing of Duct Openings

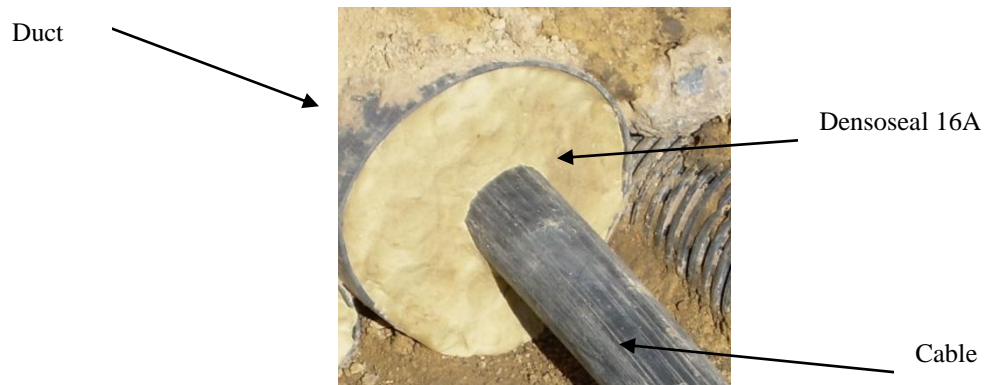
2. Introduction

Gas and water can accumulate in underground ducts such as those carrying telephone or electricity supply cables. Where ducts terminate inside buildings, manholes or chambers they must be sealed against gas and water. Densoseal 16A is especially suitable for those applications where ducts are wet or liable to fill with water.

3. Scope

This application method statement is prepared by Winn & Coales (Denso) Ltd for general use and does not address any site specific issues.

4. Illustration of Use



5. Materials

5.1. Material Description

Densoseal 16A. No primer or other materials is required.

5.2. Material Storage

Densoseal 16A shall be stored in original packaging and accordance with the manufacturer's recommendations as set out in the Technical Data Sheets and in a dry area, not in direct sunlight.

6. Equipment and Training

No Special Equipment required

No special training is normally required for applicators. It is recommended that the applicators are competent in general building practices.

7. Surface Preparation

The inner surface of the duct shall be free from dirt, dust, loose rust, scale, previously applied sealants and contamination. The inner surface shall preferably be dry.

Application Method Statement

8. Method of Application

Remove all packaging. Mould the Densoseal 16A by hand to a shape and size that can be conveniently placed to fully surrounding of the cable. Densoseal 16A shall be packed into the ends of the duct by hand and moulded firmly around cables and against the duct ensuring there are no gaps or fissures. The mastic shall be packed to a depth at least equal to the diameter of the duct. Continue applying the Densoseal 16A by progressively filling the void until the Densoseal 16 A is flush with the duct. Figure-1 illustrates the method of applying Densoseal 16A in a duct around a cable.

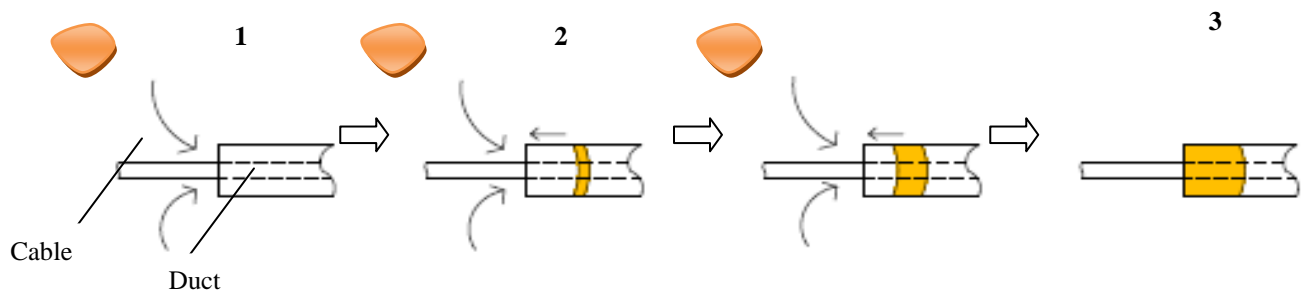


Figure 1: Application of Densoseal 16A

Note: If the Duct dimensions physically prevent access to the inner part of the duct then the Densoseal 16A can be applied in a similar method but by starting from the outer section of the duct and pressing inwards (see figure 2)

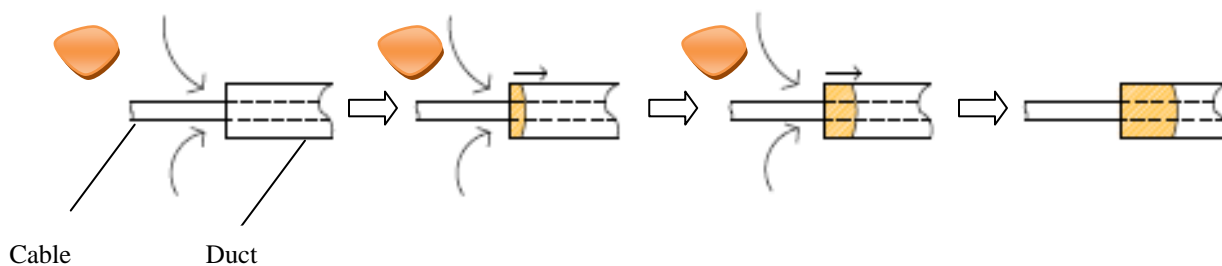


Figure 2: application of Densoseal 16A (smaller duct diameter)

9. Inspection

The following visual inspection is recommended. Check that the Densoseal 16A is free from trapped air / blisters voids or fissures. Check that the Densoseal 16A is flush with the duct.

10. Health and Safety

Safety Data Sheets are available from Winn & Coales (Denso) Ltd. This Application Method Statement does not constitute a risk assessment.

11. Other Information

Additional information may be obtained from:

Winn & Coales (Denso) Ltd,
Technical Sales Department
Tel: 0208 670 7511



Application Method Statement

12. Contents

1.	Densoseal 16A - Sealing of Duct Openings	1
2.	Introduction	1
3.	Scope	1
4.	Illustration of Use	1
5.	Materials	2
5.1.	Material Description	2
5.2.	Material Storage	2
6.	Equipment and Training	2
7.	Surface Preparation.....	2
8.	Method of Application.....	3
9.	Inspection	4
10.	Health and Safety	4
11.	Other Information	4
12.	Contents.....	5



THORNE &
DERRICK
 INTERNATIONAL

Thorne & Derrick
 +44 (0) 191 410 4292
www.powerandcables.com