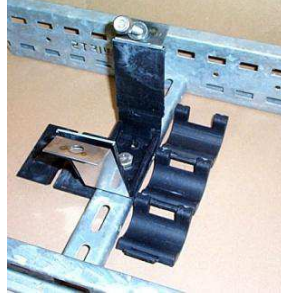


## Installation Instructions Triplex Cable Surround

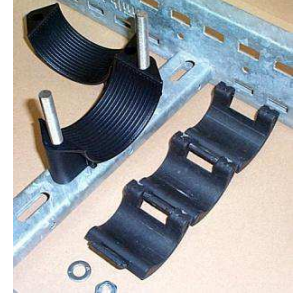
Emperor



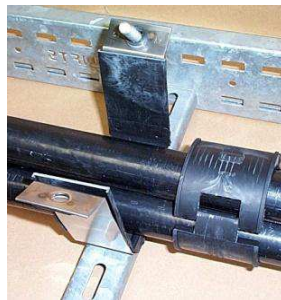
Vulcan



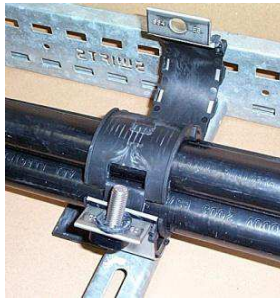
Two Hole Clamp (2F)



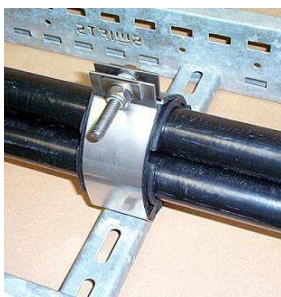
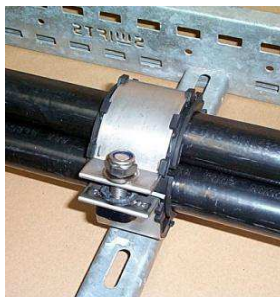
1) Locate and fix the cleat to the support structure, insert the appropriate base pad (Emperor and Vulcan).



2) Insert the cables, attach and close the Triplex Cable Surround onto the cables.



3) Slide the Triplex Cable Surround along the cables until it is in position on the cleat.



4) Close the cleat and tighten. **Important**, do not over tighten the cleat. The Triplex Cable Surround should be in contact with the cables but should not distort the cable jacket.

Please note: Thread galling is a known phenomenon which can occur when using stainless steel fasteners. A breakdown in the material's protective oxide layer results in the set screw and nut becoming welded together. To reduce the incidence of thread galling excessive pressure and speed should be avoided during installation. Thread lubricants can also be used at the point of application if problems are experienced - please contact Ellis Patents for further information.

