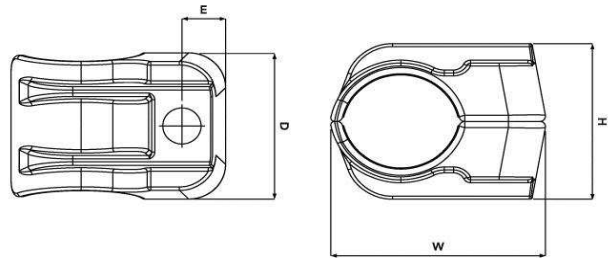


One Hole Aluminium Cableclamp (1A) Data Sheet

Manufactured as standard in plain LM6 aluminium to BS 1490. Used to fix power cables in dry industrial or outdoor unpolluted applications. The product can be epoxy coated for use in harsh environments, such as sea air conditions.



Selection Table for One Hole Aluminium Cable Clamps

| Part No | Cable Dia. Range mm | Dimensions | | | | Fixing Hole | Pack Qty. | Weight g |
|---------|---------------------|------------|------|------|------|-------------|-----------|----------|
| | | W mm | H mm | D mm | E mm | | | |
| 1A-10N | 10-13 | 37.8 | 27.0 | 41.4 | 10.2 | 1 x M10 | 1 | 43 |
| 1A-11N | 13-16 | 41.2 | 30.0 | 41.4 | 10.4 | 1 x M10 | 1 | 52 |
| 1A-12N | 16-19 | 44.3 | 33.0 | 41.4 | 10.7 | 1 x M10 | 1 | 61 |
| 1A-13N | 19-23 | 48.2 | 36.0 | 41.4 | 10.9 | 1 x M10 | 1 | 68 |
| 1A-14N | 23-27 | 52.2 | 40.0 | 41.4 | 11.3 | 1 x M10 | 1 | 78 |
| 1A-15N | 27-32 | 57.1 | 44.0 | 41.4 | 11.6 | 1 x M10 | 1 | 85 |
| 1A-16N | 32-38 | 63.1 | 49.0 | 41.4 | 12.1 | 1 x M10 | 1 | 97 |
| 1A-17N | 38-46 | 71.3 | 58.0 | 41.4 | 12.9 | 1 x M10 | 1 | 121 |
| 1A-18N | 46-51 | 77.3 | 67.0 | 41.4 | 13.5 | 1 x M10 | 1 | 155 |
| 1A-19N | 51-57 | 83.2 | 72.0 | 41.4 | 13.9 | 1 x M10 | 1 | 171 |

Testing Information

One Hole Cable Clamps have been tested in line with the International Standard of "Cable Cleats for Electrical Installations" IEC 61914:2009. Typical results below.

| Properties | BS EN 61914:2009 Classification Clause | Units / Classification | Test Data |
|--|--|---|------------|
| Cleat Type | 6.1.1 | Metallic | - |
| Impact Resistance | 6.3.5, 9.2 | Very Heavy Classification (>6.7kg @ 300mm) | Pass |
| Resistance to Electro Mechanical Force | 6.4, 6.4.4, 9.5.3 | Refer to Ellis Patents for further details. | |
| Temperature for Permanent Application | 6.2 | °C | -40 to 120 |
| Needle Flame Test | 10.0, 10.1 | Application Time (seconds) | >120 |
| Lateral Load Test | 9.3 | Newtons (N) | 4000 |
| Axial Movement Test | 9.4 | Newtons (N) | 300 |

