

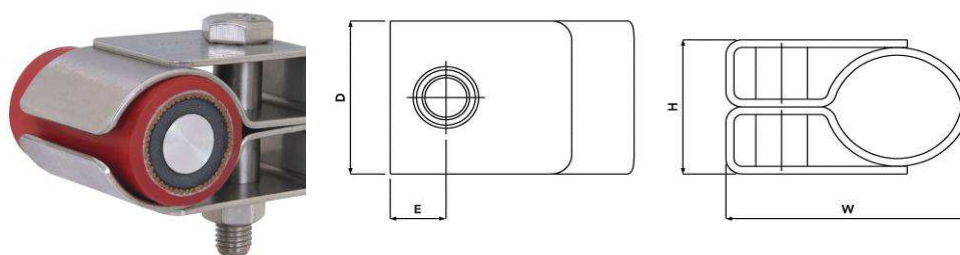
## Phoenix Cable Clamp Datasheet

The Cableclamps have been successfully tested for fire resistance in accordance with BS 8491:2008 and also BS 5839-1: 2002, section 26.2d.

Short Circuit testing in accordance with IEC 61914:2009 has also been completed successfully. (60.1kA, Report PDL-09.203.1 Carried out at Damstra Laboratories NL)

The Phoenix Fire Rated Cableclamps are manufactured from 316L Stainless Steel.

**Community Design Reg. No: 000355854-0002**



Part Number	Cable Diameter (mm)		Dimensions (mm)				Fixing Holes	Approx. Weight (g)
	Min	Max	H	W	D	E		
1FP-10SS	10	13	21	40	40	13.7	1 x M10	91
1FP-11SS	13	16	24	44	40	13.7	1 x M10	106
1FP-12SS	16	19	27	47	40	13.7	1 x M10	114
1FP-13SS	19	23	31	51	40	13.7	1 x M10	126
1FP-14SS	23	27	35	55	40	13.7	1 x M10	140
1FP-15SS	27	32	40	60	40	13.7	1 x M10	155
1FP-16SS	32	38	46	66	40	13.7	1 x M10	176
1FP-17SS	38	46	54	74	40	13.7	1 x M10	202
1FP-18SS	46	51	59	80	40	13.7	1 x M10	225
1FP-19SS	51	57	64	85	40	13.7	1 x M10	245
1FP-20SS	57	65	73	93	40	13.7	1 x M10	265
1FP-21SS	65	74	82	98	40	13.7	1 x M10	293

Phoenix Cable Clamps are compliant with the requirement of London Underground Standard 1-085. Product Register No. 1661



**London Underground**