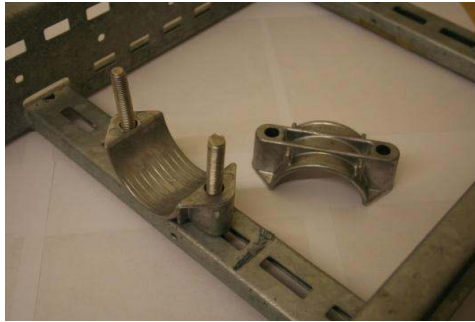


## Installation Instructions 2A Aluminium Two Hole Cable Clamp

### 2A Clamp

1) Position the cable clamp and 2 bolts (not supplied) onto the support structure.



2) Install the cable.



3) Locate the other half of the cable clamp. Secure with 2 fastening nuts and washers (not supplied) and tighten.



4) **Important.** Do not over tighten the cleat. The cleat should secure the cable but does not need to be so tight that the cable bulges at either side of the cleat.

