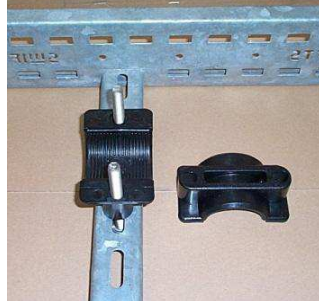


## Installation Instructions Two Hole Cable Clamp

- 1) Position the cable clamp and 2 bolts (not supplied) onto the support structure.

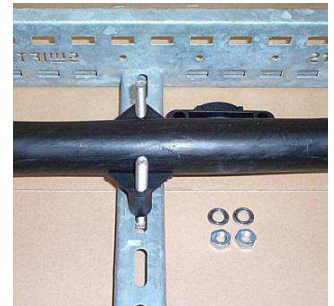
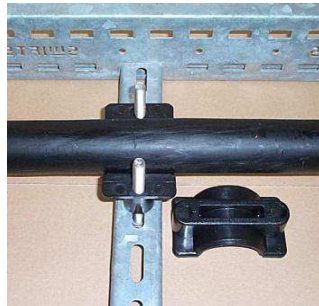
2H Clamp



2F Clamp



- 2) Install the cable.



- 3) Locate the other half of the cable clamp. Secure with 2 fastening nuts and washers (not supplied) and tighten.



- 4) **Important.** Do not over tighten the cleat. The cleat should secure the cable but does not need to be so tight that the cable bulges at either side of the cleat.

