

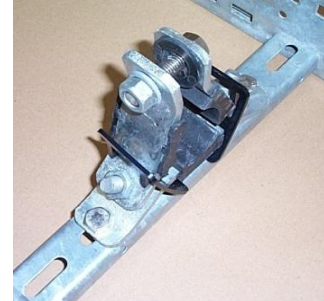
Installation Instructions Atlas Cleat

- 1) Position the cable clamp and fixing (not supplied) onto the support structure.

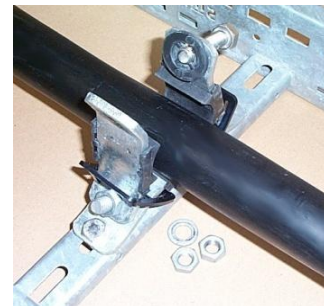
Multi Cable



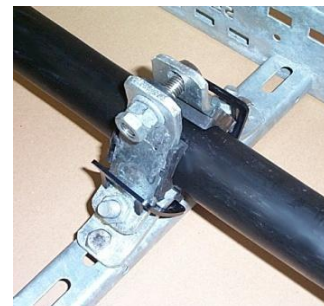
Single Cable



- 2) Install the cable.



- 3) Locate the other half of the cable clamp. Secure with a nut and washer (not supplied) to the support structure and tighten.



- 4) **Important:** Do not over tighten the cleat. The cleat should secure the cable but does not need to be so tight that the cable bulges at either side of the cleat.



WARNING - to prevent eddy currents and heating of the cleat the top tensioning bolt is made of stainless steel. Ensure that only this bolt is used and that bridging cannot take place.