

ELLIS NO BOLTS CLEAT

Non-Metallic Short Circuit Tested Cable Cleat
Patent Pending



Orientation	Peak	Phase Spacing	Cleat Spacing	IEC61914
Stacked	71.7 kA	75mm	300mm	Cat. 2 pass
Horizontal	101 kA	110mm	300mm	Cat. 2 pass

NON-METALLIC RAPID INSTALLATION CABLE CLEAT

Ellis No Bolts Cleat is a fully polymeric cable cleat designed for fast installation. The cleat is manufactured from a high strength nylon specifically formulated to meet the London Underground 1-085 specification.

Due to its non-metallic design the cleat is impervious to 'bi-metallic corrosion' and suitable for use in the harshest of environments.

Stackable design for multiple cable runs.

No risk of damaging cable.

Range suits $\varnothing 18 - \varnothing 55$ mm single cables.

Fast installation.

Part No.	Cable \varnothing Range mm
NBC18-22	18 - 22
NBC20-26	20 - 26
NBC24-30	24 - 30
NBC28-34	28 - 34
NBC32-39	32 - 39
NBC37-47	37 - 47
NBC45-55*	45 - 55

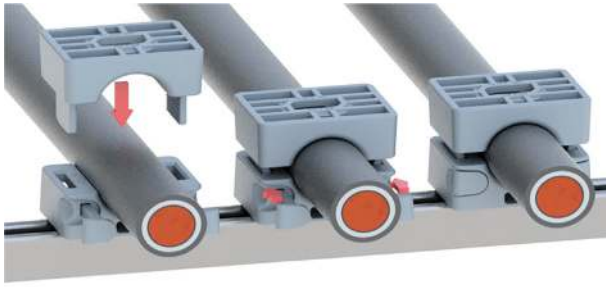
For the twist fit foot feature add a 'TF' suffix
e.g. NBC 18-22TF.

* This size is not supplied with insert mouldings.

Note: Part No's are preliminary and could be subject to change.

ELLIS NO BOLTS CLEAT

PUSH FIT LOCKING MECHANISM ON THE KEEPERS AND THE TOP CLAMP PROVIDE FAST INSTALLATION.

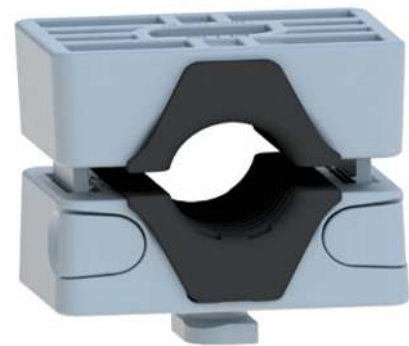
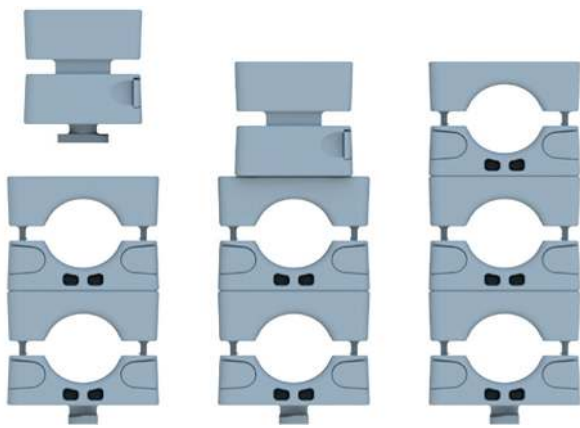


THE CLEAT CAN BE SUPPLIED WITH AN M8 THROUGH HOLE FIXING OPTION OR CHANNEL TWIST FIT FEATURE.

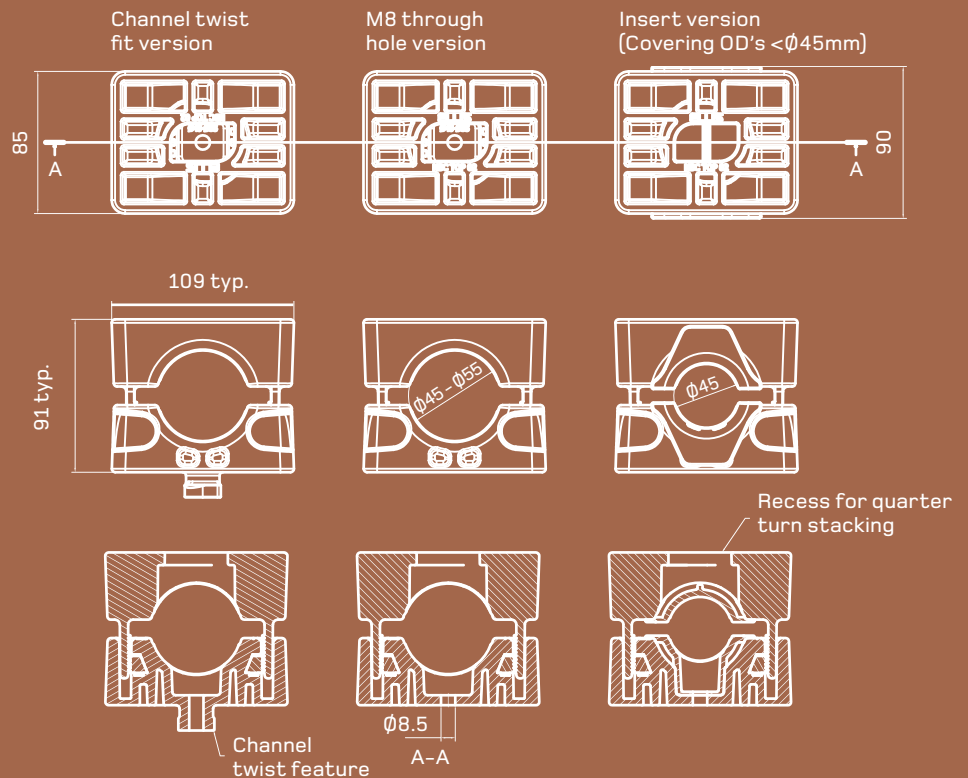
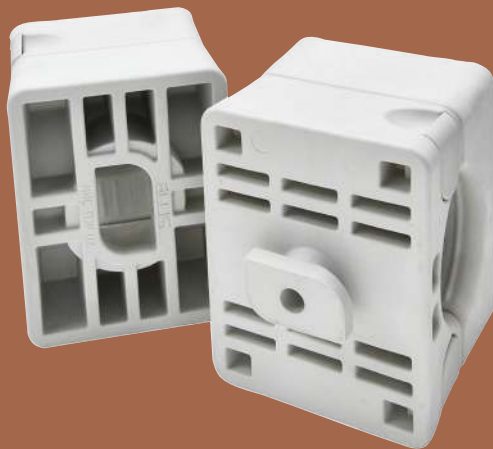


THE CLEATS CAN BE STACKED ON A QUARTER TURN FEATURE PROVIDED BY CHANNEL TWIST FIT VERSIONS.

DESIGNED TO ACCOMMODATE 18-55MM SINGLE CABLE RANGE TAKE.



DIMENSIONS



THORNE & DERRICK
INTERNATIONAL

Thorne & Derrick
+44 (0) 191 410 4292
www.powerandcables.com