

Claw Cleat (Cast Iron)

370 Series



The cast iron claw cleat is the premium choice for fire performance cables. Suitable for all cable routes, the claw cleat can tolerate a two hour excursion of up to 1000°C.

Features and Benefits

- Suitable for use with cable diameters 10 - 54mm.
- Hot dip galvanised finish on cast iron.
- Two-piece, single fixing design.
- Can be stacked to a maximum of three on one fixing.
- Operating temperature -60°C to +105°C.
- Can withstand a 2 hour excursion to 1000°C.
- Can be used for all types of cable routes.
- Suitable for all environments.
- Packing pieces to be used where required.
- LUL APR Product ID 1961.
- Allows fire performance cables to meet the requirements of BS 6387:1994, BS 5839-1:2002, BS7346-6:2005 & BS8491:2008.

Performance Data

| Test Standard | EN 50368:2003 |
|-------------------|-------------------|
| Type | 6.1.1 Metallic |
| Impact Resistance | 6.2.5 V. Heavy |
| Lateral Load | 3.7 -> 8.2 kN |
| Axial Load | 1.332 -> 5.855 kN |
| Needle Flame | >120 secs |

* Technical Information subject to change without notice



Technical Data

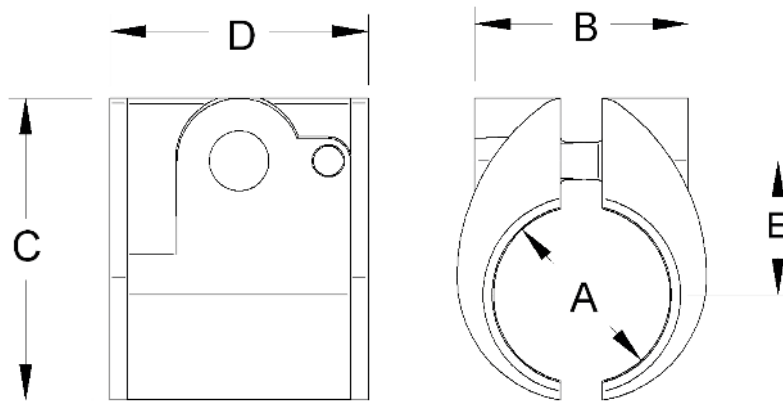


| Cable and Cleat Selection | | | Cleat Details | | | | | |
|---------------------------|----------------|-----|-----------------|----|----|----|------------|-----------|
| Design Number | Cable diameter | | Dimensions (mm) | | | | Weight (g) | Stud Size |
| | A (mm) | | B | C | D | E | | |
| | Min | Max | | | | | | |
| 370CG01 | 10 | 13 | 22 | 38 | 46 | 16 | 227 | M10 |
| 370CG02 | 13 | 16 | 22 | 38 | 46 | 16 | 208 | M10 |
| 370CG03 | 16 | 19 | 25 | 41 | 46 | 18 | 232 | M10 |
| 370CG04 | 18 | 22 | 28 | 45 | 46 | 19 | 279 | M10 |
| 370CG05 | 21 | 26 | 32 | 48 | 46 | 21 | 299 | M10 |
| 370CG06 | 25 | 32 | 37 | 54 | 46 | 24 | 319 | M10 |
| 370CG07 | 31 | 38 | 43 | 60 | 46 | 27 | 395 | M10 |
| 370CG08 | 36 | 46 | 53 | 67 | 46 | 30 | 492 | M10 |
| 370CG09 | 44 | 54 | 59 | 73 | 46 | 33 | 502 | M10 |

* Technical information subject to change without notice

Method of Fixing

In all applications the cleats should be mounted on suitable fixings, see table for appropriate size. When mounting directly on channel, adaptor plates 380AG02 should be used. When stacking claw cleats use packing piece 389AC01 between cleats.



Prysmian Cables & Systems Limited,
Oak Road, Wrexham Industrial Estate, Wrexham, LL13 9PH, UK

Commercial Enquiries,
Sales Office Tel: 0845 767 8345,
International Sales Office Tel: +44 2380 295481

www.biconcomponents.co.uk