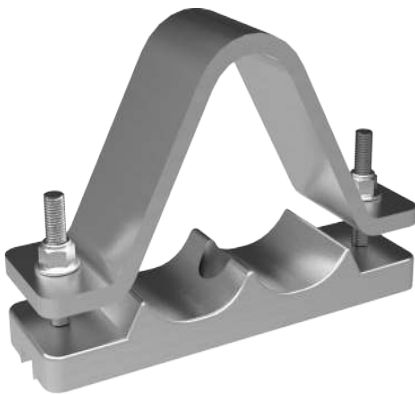


## Orion Cleat 376 Series



**The orion cleat provides the strongest support for cables laid in trefoil formation. Suitable for LV, MV and HV cable designs, the orion cleat features deep cast bases to aid easy cable installations.**

### Features and Benefits

- Suitable for use with cable diameters 62-186mm.
- Manufactured from aluminium alloy.
- Suitable for use on LV, MV & HV cable designs.
- Single or two bolt fixing.
- Designed for use with larger diameter single core cables laid in trefoil formation.
- Deep section cast bases aid cable installation.
- Can be supplied with rubber liners.
- Profiled versions are available to meet specific design requirements.
- Tested in accordance with EN 50368:2003.

### Performance Data

BS EN 61914	Clause	Classification
Type	6.1.1	Composite
Operating Temperature	6.2	-40 °C to +105 °C
Impact Resistance	6.3	Heavy
Needle Flame	10.1	>120secs

BS EN 61914	Clause	Classification
Resistance to Short Circuit	6.4.4 (2 short circuit) (HV Cable used)	31kA rms, 80kA peak
Corrosion	6.5.2	High, Outdoor - wet conditions (coating required for marine locations)

\* Technical information subject to change without notice



## Technical Data

Cable and Cleat Selection				Cleat Details				
Design Number		Cable Diameter (mm)		Dimensions (mm)			Fixing Size	Weight (kg)
Standard	Epoxy coated	Min	Max	A	C	B		
376TR06	376TE06	62	75	260	216	80	M12	2.484
376TR07	376TE07	75	90	295	251	80	M12	3.326
376TR08	376TE08	90	107	340	296	100	M12	4.168
376TR09	376TE09	107	129	390	346	100	M12	4.951
376TR10	376TE10	129	155	450	406	125	M12	9.500
376TR11	376TE11	155	186	525	481	150	M12	11.536

Note 1: All cleats have the facility for single or two bolt fixing for M12 bolt. If 2 bolt fixings are used a minimum grade of 8.8 must be selected  
 Note 2: 376TR11 and 376TE11 have four fixing bolts. Dimension C as above with 70mm between the bolts.

