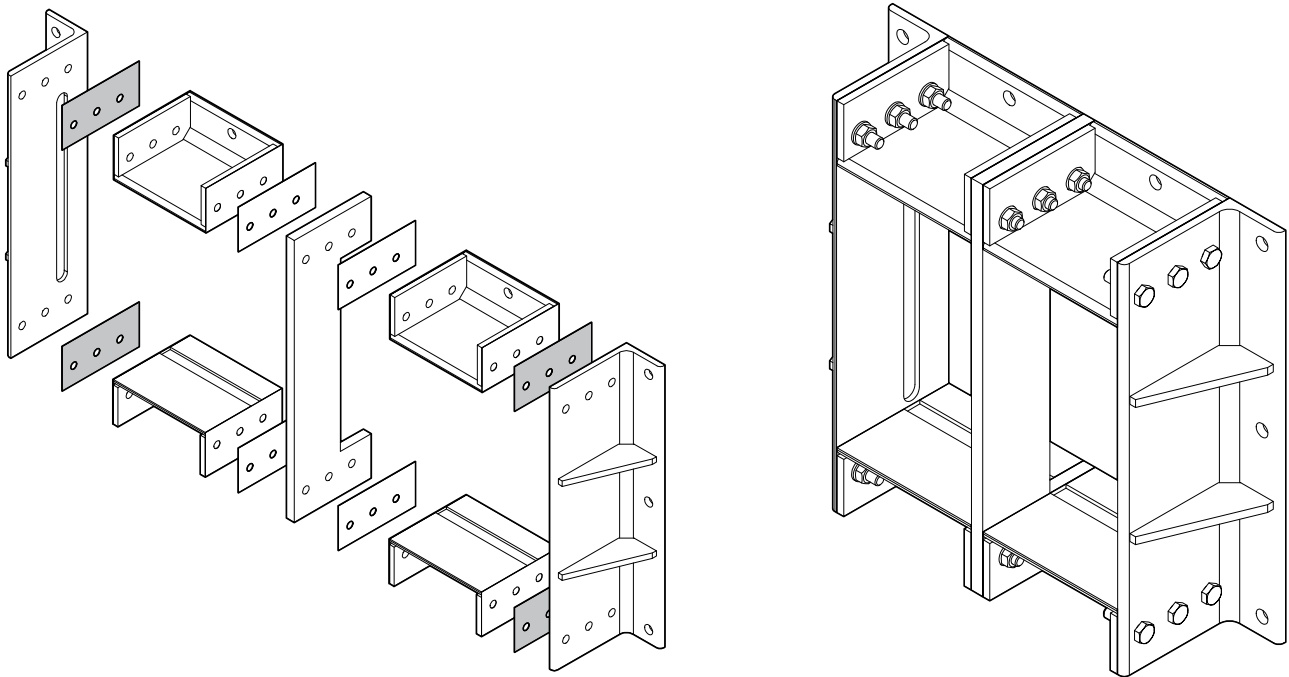




Installation instructions  
Roxtec GKO frame



The Roxtec GKO frame is a modular frame system primarily intended for retrofit purposes.

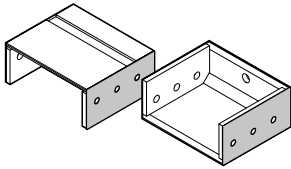
**Aperture**

Make a round or rectangular aperture according to the table below.  
The table shows maximum recommended aperture per frame size.

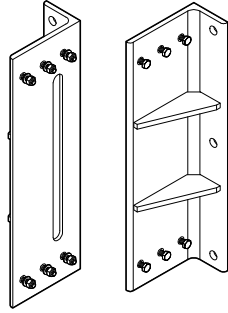
Frame	Maximum height (mm)	Maximum width (mm)									
		x1	x2	x3	x4	x5	x6	x7	x8	x9	x10
2	101	120	251	382	512	643	773	904	1034	1165	1295
4	160										
6	218										
8	278										

Height and width tolerance ± 5 mm

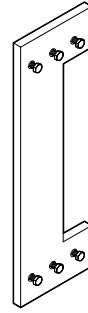
## Parts



Short side including gasket

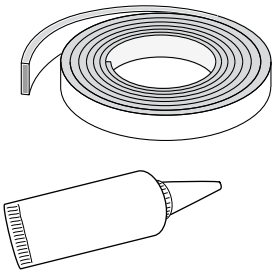


Long side including fasteners

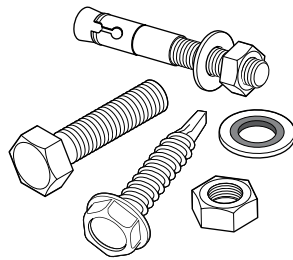


Midwall including fasteners

## Parts not included

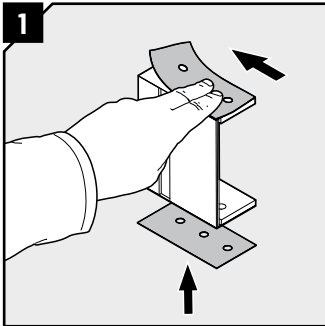


Structure gasket and sealant

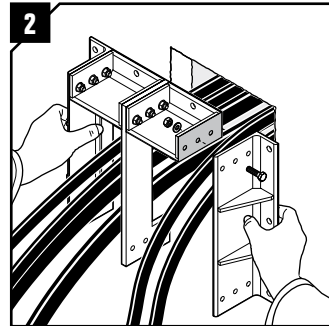


Fasteners

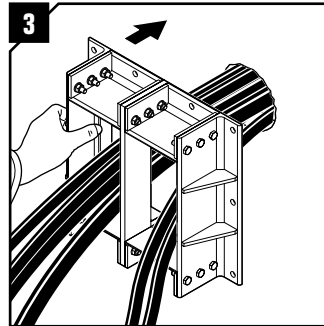
## Installation



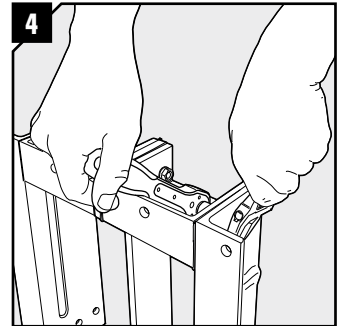
1 If not mounted at delivery, mount the gaskets to the short side.



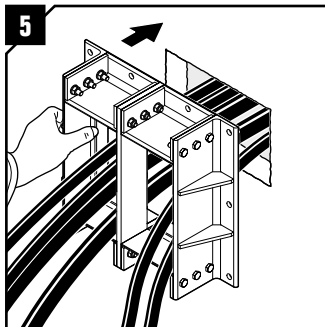
2 Assemble the Roxtec GKO frame around the cables.



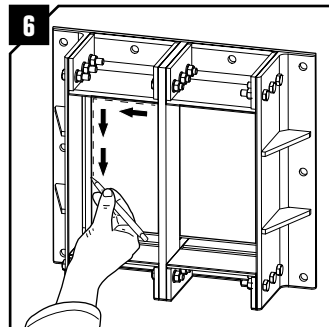
3 It is possible to use a GKO frame in cases with many cables in a small aperture.



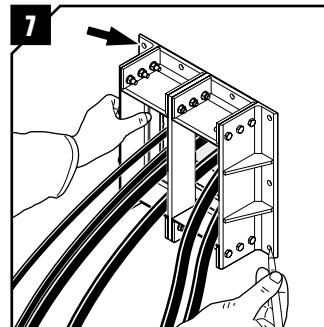
4 Tighten the fasteners firmly.



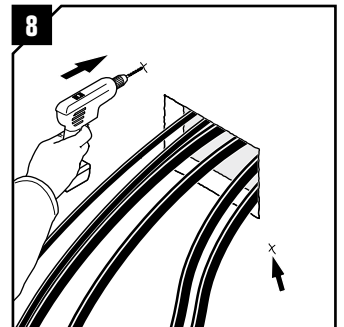
5 Place the frame against the structure.



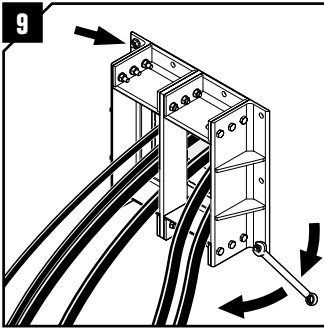
6 If the aperture is not made, the inner edge can be used as template.



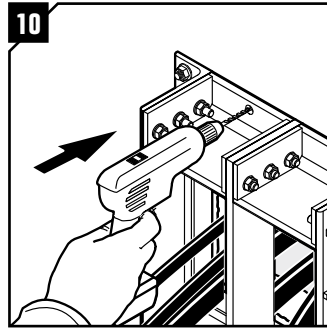
7 Center the frame in the aperture and use it as template for the flange hole pattern. Make two marks diagonally and remove the frame.



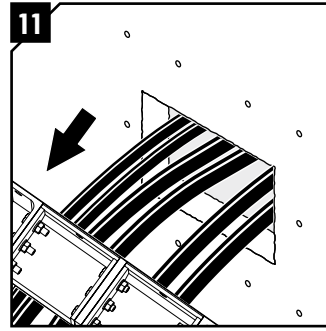
8 Drill holes for two of the fasteners.



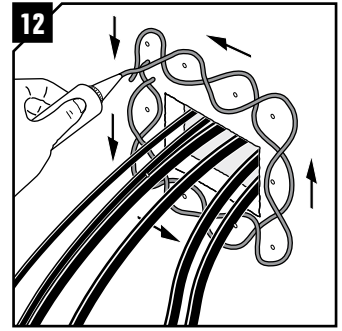
Fasten the frame with two fasteners.



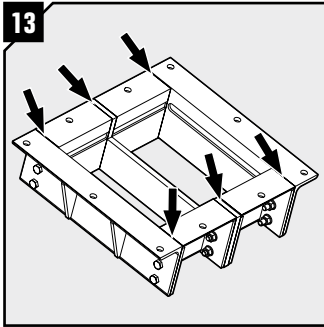
With the frame in place, drill the holes for the remaining fasteners.



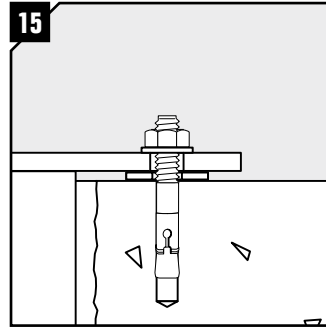
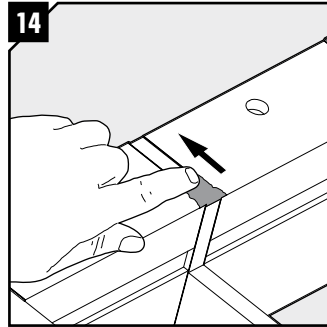
Remove the frame from the structure.



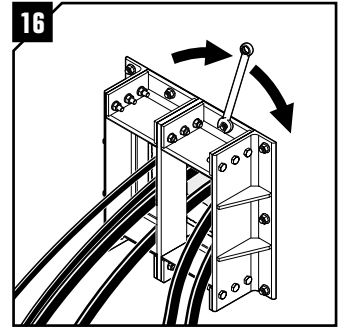
Apply sealant to the structure with a thickness not less than 6 mm.



Smooth out imperfections on the surface of the frame by applying sealant to the joints of the frame.



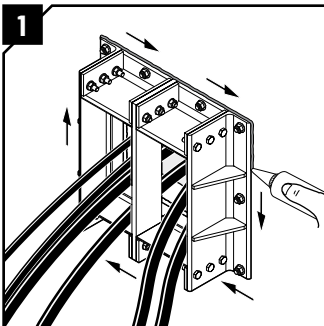
Attach washers or similar behind the flange to ensure a 2 mm gap between the frame flange and the structure.



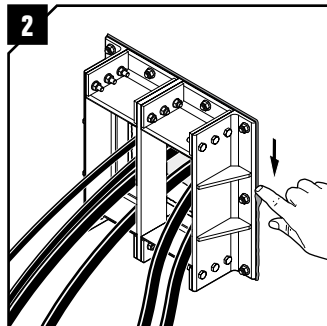
Place the frame and fasten it. Tighten the fasteners crosswise in small steps to the specified torque according to the fastener specification.

## Optional

For increased resistance against crevice corrosion and frost wedging.

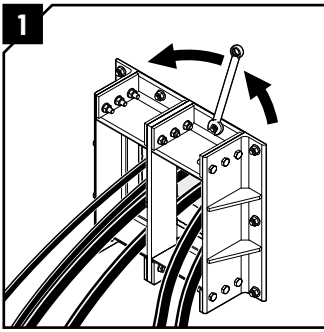


Apply a final string of sealant around the perimeter of the flange.

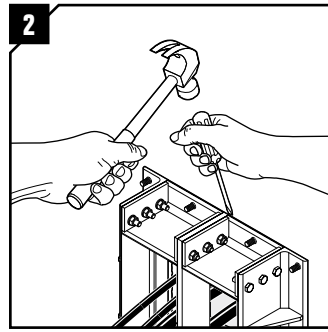


Smooth out the sealant so that it closes any gap completely all around. Consider the curing time of the sealant.

## Disassembly

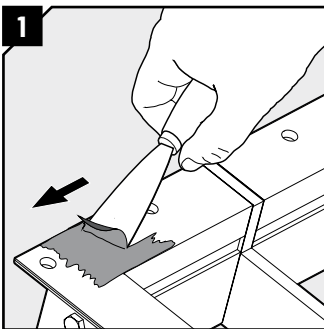


Remove all fasteners holding the frame to the structure.



Use a suitable tool to remove the frame from the structure.

## Reinstallation



Prior to reinstallation, all sealant and gaskets must be removed and replaced.



**THORNE &  
DERRICK  
INTERNATIONAL**

**Thorne & Derrick**  
+44 (0) 191 410 4292  
[www.powerandcables.com](http://www.powerandcables.com)

### Note

- For module and compression unit installation, use installation instructions supplied with the modules.

### DISCLAIMER

"The Roxtec cable entry sealing system ("the Roxtec system") is a modular-based system of sealing products consisting of different components. Each and every one of the components is necessary for the best performance of the Roxtec system. The Roxtec system has been certified to resist a number of different hazards. Any such certification, and the ability of the Roxtec system to resist such hazards, is dependent on all components that are installed as a part of the Roxtec system. Thus, the certification is not valid and does not apply unless all components installed as part of the Roxtec system are manufactured by or under license from Roxtec ("authorized manufacturer"). Roxtec gives no performance guarantee with respect to the Roxtec system, unless (I) all components installed as part of the Roxtec system are manufactured by an authorized manufacturer and (II) the purchaser is in compliance with (a), and (b), below.  
(a) During storage, the Roxtec system or part thereof, shall be kept indoors in its original packaging at room temperature.  
(b) Installation shall be carried out in accordance with Roxtec installation instructions in effect from time to time.  
The product information provided by Roxtec does not release the purchaser of the

Roxtec system, or part thereof, from the obligation to independently determine the suitability of the products for the intended process, installation and/or use. Roxtec gives no guarantee for the Roxtec system or any part thereof and assumes no liability for any loss or damage whatsoever, whether direct, indirect, consequential, loss of profit or otherwise, occurred or caused by the Roxtec systems or installations containing components not manufactured by an authorized manufacturer and/or occurred or caused by the use of the Roxtec system in a manner or for an application other than for which the Roxtec system was designed or intended.  
Roxtec expressly excludes any implied warranties of merchantability and fitness for a particular purpose and all other express or implied representations and warranties provided by statute or common law. User determines suitability of the Roxtec system for intended use and assumes all risk and liability in connection therewith. In no event shall Roxtec be liable for indirect, consequential, punitive, special, exemplary or incidental damages or losses."



Roxtec International AB  
Box 540, 371 23 Karlskrona, SWEDEN  
PHONE +46 455 36 67 00, FAX +46 455 820 12  
EMAIL [info@roxtec.com](mailto:info@roxtec.com), [www.roxtec.com](http://www.roxtec.com)