



House Service Cut Out Single Pole

Separate Neutral and Earth (SNE)
60/80A
100A rated

Overview and presentation

Devices accepting BS 1361 cylindrical cartridge fuses
having separate Neutral and Earth blocks



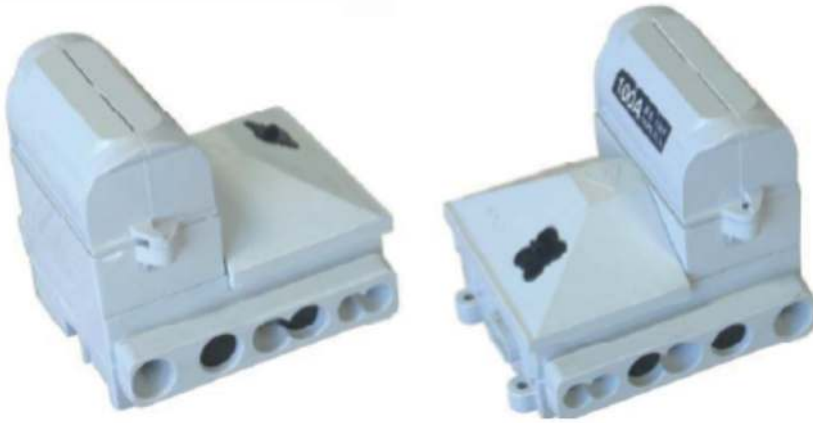
Features

- Two incoming and outgoing Phase and Neutral terminations which accept up to 35mm² conductors in either copper or aluminium, stranded or solid
- Identical incoming and outgoing flange profile means that unit is rotatable through 180 degrees
- Silver plated Phase terminal contact block
- Serrated bores on Phase/Neutral terminal contact blocks with two M8 hexagon drive pinching screws per conductor
- Two incoming and two outgoing terminals on Earth block each accepting up to 25mm² conductors
- Safety interlocked mouldings. N/E cover moulding cannot be removed until fuse carrier has been withdrawn
- Sealing wire facility
- Blanking plugs for unused cable entries provided
- Additional accessories include cable cover, cable sealing chamber and busbar extensions

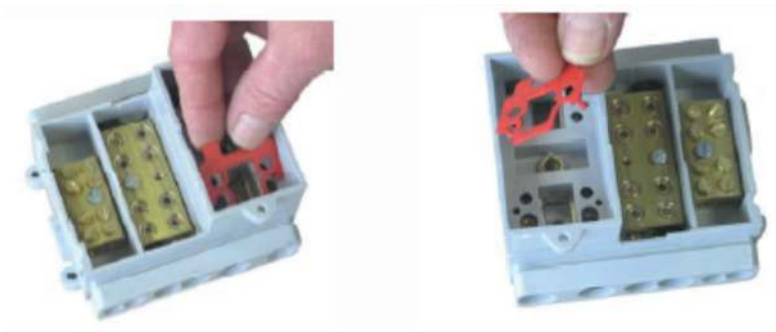
Note The equipment described on this data sheet must be installed by suitably qualified personnel according to applicable Local/ National Wiring regulations currently in force.

Low voltage - Cut outs - Single Pole Separate Neutral and Earth (SNE)

Flange and termination details



Identical sized flanges enable fuse cut out to be rotated through 180 degrees whilst still maintaining compatibility with terminal cover.



Red incoming supply marking also reversible.

Note Different combinations of fuse cut outs can be ganged to create a range of Triple pole variants

Low voltage - Cut outs - Single Pole Separate Neutral and Earth (SNE)

Construction

- Body, base and cover...Glass reinforced polyester DMC in RAL 7035 colour
- Terminal blocks.....Brass (silver plated on Phase)
- Fuse link contactsCopper

Product characteristics

- 60/80A..... 57 x 22mm Type IIa BS 1361
- 100A..... 57 x 30mm Type IIb BS 1361

Performance

- Rated voltage 240/415V a.c.
- Max rated current 100A
- Supply frequency..... 50-60Hz
- Flammability rating..... UL94 VO, self-extinguishing 30 seconds at 960°C
- Recommended terminal torque.....3.25Nm
- Fuse short circuit rating33kA at 0.3pf

Conformity to standards

- Conforms to BS 7657:2010
- Accepts fuse links in accordance with BS 1361:1991

Weight and dimensions

- Height 98mm
- Width..... 106mm
- Depth..... 96mm
- Weight (excluding fuse)..... 0.82kgs

Fuse cut out including terminal cover

- Height..... 210mm
- Width..... 125mm
- Depth..... 96mm
- Weight (excluding fuse)..... 0.87kgs

Note Different combinations of fuse cut outs can be ganged to create a range of Triple pole variants

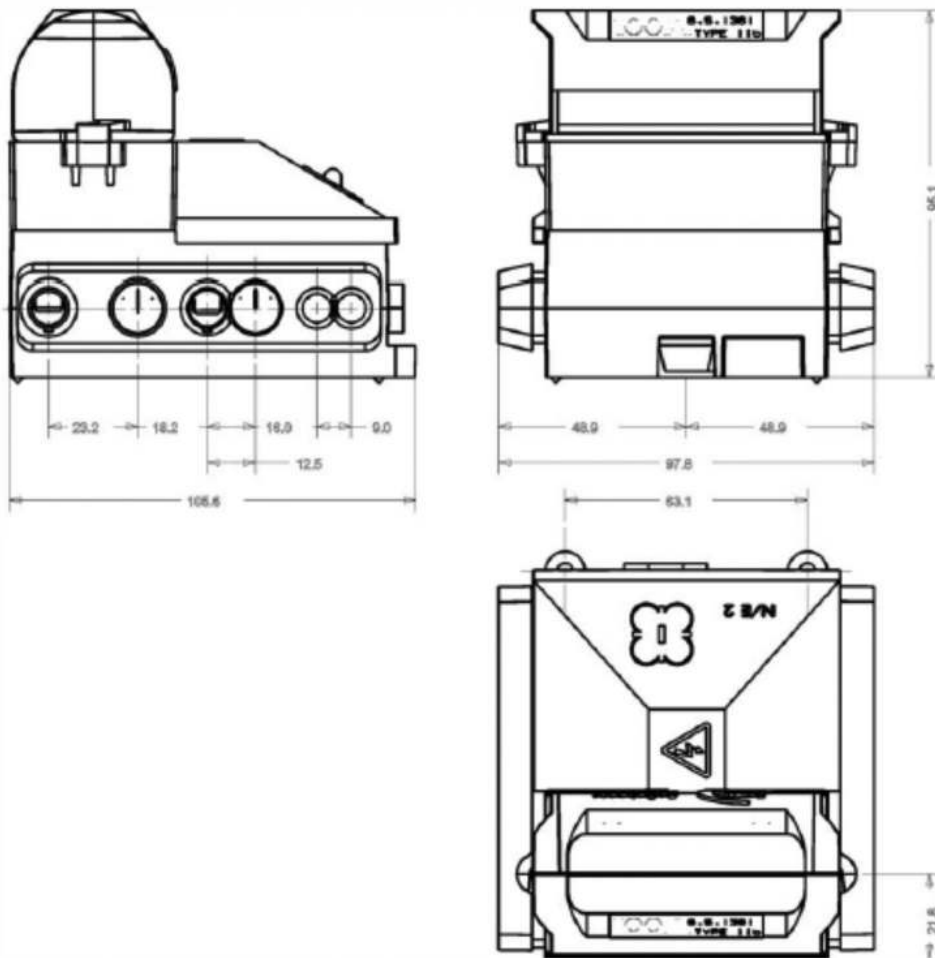


THORNE &
DERRICK
INTERNATIONAL

Thorne & Derrick
+44 (0) 191 410 4292
www.powerandcables.com

Low voltage - Cut outs - Single Pole Separate Neutral and Earth (SNE)

General arrangement and dimensions (mm)



Disclaimer Lucy Switchgear has a policy of continuous research and development and accordingly reserves the right to change the design and specifications of its products without prior notice or liability.



THORNE & DERRICK
INTERNATIONAL

Thorne & Derrick
+44 (0) 191 410 4292
www.powerandcables.com