

## AA-M MONOMETALLIC ALUMINIUM TERMINALS for aluminium cables



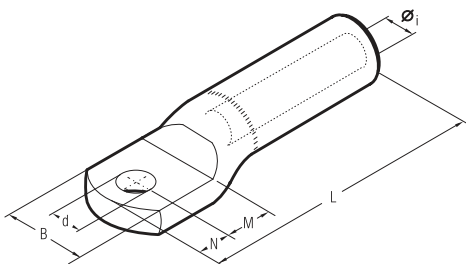
### Description:

- AA-M series terminals are made from aluminium tube of a purity equal or greater than 99,5%. The cross sectional area of the annulus and the length of the barrel are designed to assure an extremely reliable electrical connection.
- The internal surface is duly protected against the oxidation through a specific grease with a very high dropping point.
- They are studied for connecting aluminium cable of low and medium voltage.

### Features of the material:

- DESIGNATION : Al 99.50
- STANDARD OF REFERENCE : DIN 1712/1976 Teil 3
- ELECTRICAL RESISTANCE AT 20°C ( $\mu \Omega \cdot \text{cm}$ ) : 2.874
- MECHANICAL FEATURES:
  - BREAKING RESISTANCE (N/mm<sup>2</sup>) : 85 ÷ 129
  - STRETCHING AT 5 % : 10 ÷ 23

### Sections and dimensions:



| Conductor Size<br>sqmm | Ø<br>Stud<br>mm | Ref.           | Dimensions mm |    |    |    |       |      |
|------------------------|-----------------|----------------|---------------|----|----|----|-------|------|
|                        |                 |                | Øi            | B  | M  | N  | L     | d    |
| 16                     | 8               | AA 16-M 8      | 5,5           | 21 | 13 | 11 | 77,0  | 8,4  |
| 25                     | 8               | AA 25-M 8      | 6,5           | 21 | 13 | 11 | 77,0  | 8,4  |
| 35                     | 8               | AA 35-M 8      | 8,0           | 23 | 13 | 11 | 77,5  | 8,4  |
|                        | 10              | AA 35-M 10     | 8,0           | 23 | 13 | 11 | 77,5  | 10,5 |
| 50                     | 12              | AA 50-M 12     | 9,0           | 26 | 16 | 14 | 91,0  | 13,2 |
|                        | 14              | AA 50-M 14     | 9,0           | 26 | 18 | 16 | 95,0  | 15,0 |
| 70                     | 12              | AA 70-M 12     | 11,0          | 27 | 16 | 14 | 91,0  | 13,2 |
|                        | 14              | AA 70-M 14     | 11,0          | 27 | 18 | 16 | 95,0  | 15,0 |
| 95                     | 12              | AA 95-M 12     | 12,5          | 27 | 16 | 14 | 91,0  | 13,2 |
|                        | 14              | AA 95-M 14     | 12,5          | 27 | 18 | 16 | 95,0  | 15,0 |
| 120                    | 12              | AA 120-M 12    | 13,7          | 35 | 16 | 14 | 115,0 | 13,2 |
|                        | 14              | AA 120-M 14    | 13,7          | 35 | 18 | 16 | 119,0 | 15,0 |
| 150                    | 12              | AA 150-M 12    | 15,5          | 34 | 16 | 14 | 115,0 | 13,2 |
|                        | 14              | AA 150-M 14    | 15,5          | 34 | 18 | 16 | 119,0 | 15,0 |
| 185                    | 12              | AA 185-M 12    | 17,0          | 42 | 20 | 14 | 122,0 | 13,2 |
|                        | 14              | AA 185-M 14    | 17,0          | 42 | 22 | 16 | 126,0 | 15,0 |
| 240                    | 12              | AA 240-M 12    | 19,5          | 44 | 20 | 14 | 122,0 | 13,2 |
|                        | 14              | AA 240-M 14    | 19,5          | 44 | 22 | 16 | 126,0 | 15,0 |
| 300                    | 12              | AA 300-34 M 12 | 22,5          | 47 | 22 | 14 | 130,0 | 13,2 |
|                        | 14              | AA 300-34 M 14 | 22,5          | 47 | 22 | 16 | 132,0 | 15,0 |
|                        | 16              | AA 300-34 M 16 | 22,5          | 47 | 22 | 17 | 133,0 | 17,0 |
|                        | 16              | AA 300-M 16    | 23,3          | 54 | 19 | 17 | 172,0 | 17,0 |
| 400                    | 16              | AA 400-M 16    | 26,0          | 56 | 19 | 17 | 172,0 | 17,0 |
| 500                    | 16              | AA 500-40 M 16 | 29,1          | 57 | 22 | 19 | 177,0 | 17,0 |
| 630                    | 16              | AA 630-M 16    | 32,5          | 70 | 22 | 19 | 177,0 | 17,0 |



**THORNE &  
DERRICK  
INTERNATIONAL**

**Thorne & Derrick**  
+44 (0) 191 410 4292  
www.powerandcables.com