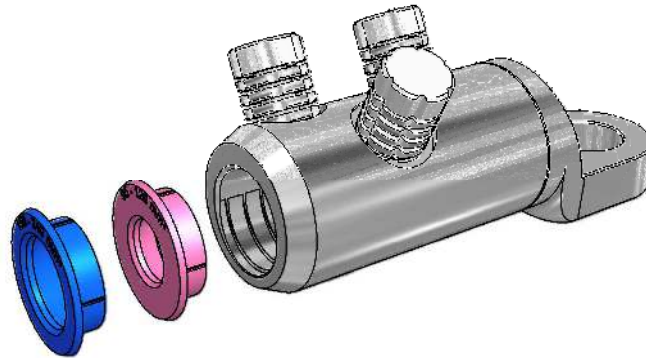


Mechanical Termination
with Moisture/Contaminant
Block for Medium/High
Voltage Applications

MECHANICAL CONNECTORS









'EUML' Aluminium Terminations

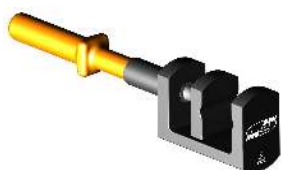


Principle Application:

Termination of circular stranded aluminium or copper conductors for all cable voltages up to and including 42kV.

Range:

Connector Reference	Internal Bore (mm ²)	Cable Range (mm ²)						Stud Size (mm)	Cable Centralising Ring (s)	
									Colour	Range (mm ²)
		Stranded Circular (mm ²)	Solid Circular (mm ²)	Solid Sector 3 core (mm ²)	Solid Sector 4 core (mm ²)	Stranded Sector	Compacted Circular			
EUML0-12	13	16-95	16-95	50	50-70	35-75	16-95	12	White x 1 Green x 1	16-25 35-50
EUML1-12 EUML1-16	16	35-150	35-150	25-95	25-95	50-120	35-150	12	Orange x 1 Purple x 1	35-50 70-95
EUML2-12 EUML2-16	21	50-240	50-240	50-150	50-185	50-240	50-240	12 16	Yellow x 1 Red x 1	50-95 120-150
EUML2.5-12 EUML2.5-16 EUML2.5-20	26	95-400	95-400	185-240	185-300	185-240	95-400	12 16 20	Pink x 1 Blue x 1	95-120 150-240
EUML3-12 EUML3-16 EUML3-20	30	240-500	240-500	-300	-	240-300	240-500	12 16 20	Brown x 1	240-300
EUML8-12 EUML8-16 EUML8-20	34	400-630	400-630	-	-	300-400	400-630	12 16 20	-	-
EUML9-16 EUML9-20	43	800-1000	800-1000	-	-	-	800-1000	16 20	-	-



'JTS/22 BR'
Holding Tool



JTS/27 (M18)
JTS/32 (M12)
1/2"sq Driver



JTS/24 (M18)
JTS/31 (M12)
17 A/F Driver



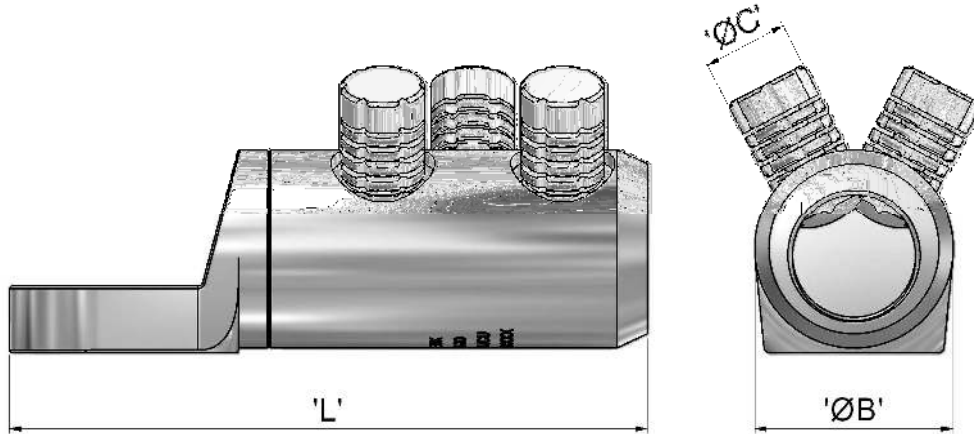
THORNE &
DERRICK
INTERNATIONAL

Thorne & Derrick
+44 (0) 191 410 4292
www.powerandcables.com

2.21e

Mechanical Termination
with Moisture/Contaminant
Block for Medium/High
Voltage Applications

'EUML' Aluminium Terminations



Connector Reference	Dimensions (mm)		
	'L'	'ØB'	'ØC'
EUML0	65	25	M12 x 1
EUML1	80	28	M12 x 2
EUML2	105	34	M18 x 2
EUML2.5	135	42	M18 x 3
EUML3	143	47	M18 x 3
EUML8	143	51	M18 x 3
EUML9	153	63	M18 x 4

Material: Aluminium Alloy (Electro-Tinned)

Test Specification: BS EN 61238-Class A

Test Report No: TTR/345

Fitting instructions:

1. Strip insulation from the core equal to the depth of the bore.
2. Wire brush the exposed conductor cores and wipe clean (optional).
3. Fit the appropriate sized cable centralising ring (if required).
* **NOTE:** Not required for LV cable cores.
4. Align and position the conductor core in the bore ensuring that the core is fully inserted.
5. Fit the universal shear screws within the connector and torque tighten one turn at a time, using the correct tool, until the bolts have sheared.



THORNE &
DERRICK
INTERNATIONAL

Thorne & Derrick
+44 (0) 191 410 4292
www.powerandcables.com