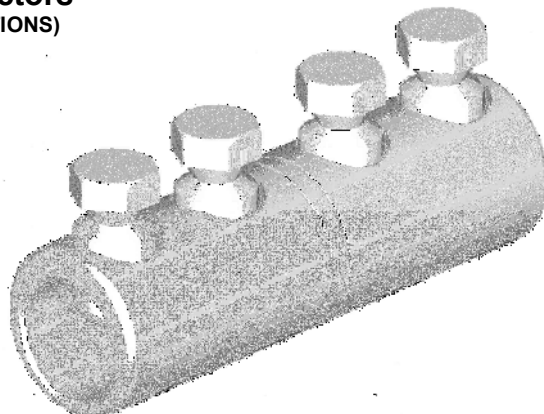


Straight mechanical ferrule with moisture / contaminant block

## MECHANICAL CONNECTORS



### MF15/.../WPB Connectors (WAVEFORM POLE TERMINATIONS)



#### Principle Application:

For the connection of solid sector shaped cores to ABC stranded circular cores.

#### Range:

Connector Reference	Core C.S.A. (mm <sup>2</sup> )					
	Circular Stranded ABC		Waveform Solid			
			3 Core		4 Core	
	Min	Max	Min	Max	Min	Max
MF15/1/WPB	70	95	70	95	70	95
MF15/4/WPB	95	120	240	300	240	300
MF15/5/WPB	50	120	95	240	95	240

Note: For jointing other core configurations/sizes please contact Sicame Technical Dept

The MF15/WPB range of single shear head mechanical connectors incorporate an integral moisture/contaminant block and comes complete with core stripping guides.



**THORNE &  
DERRICK**  
INTERNATIONAL

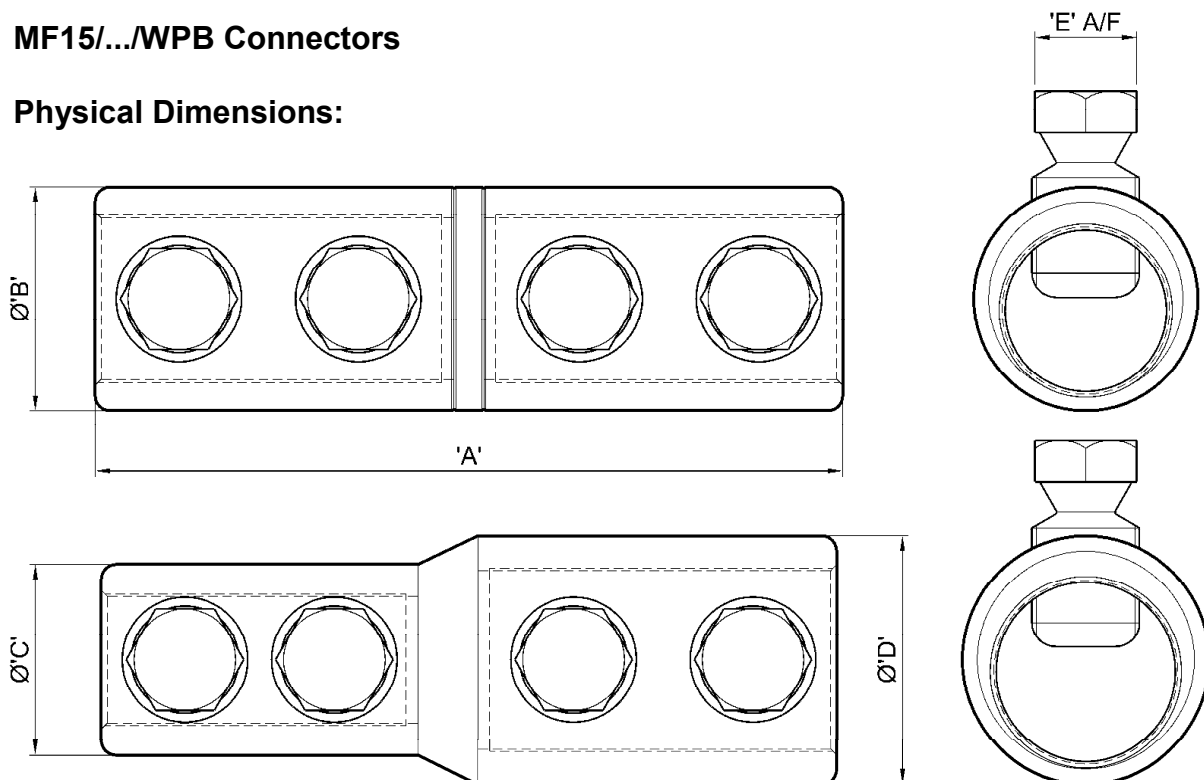
**Thorne & Derrick**  
+44 (0) 191 410 4292  
www.powerandcables.com

Straight mechanical ferrule with moisture / contaminant block

## MECHANICAL CONNECTORS

### MF15/.../WPB Connectors

#### Physical Dimensions:



Connector Reference	Dimensions (mm)				
	'A'	Ø'B'	Ø'C'	Ø'D'	'E' A/F
MF15/1/WPB	107.0	28.0	N/A	N/A	17.0
MF15/4/WPB	123.0	N/A	32.0	41.3	17.0
MF15/5/WPB	119.0	N/A	32.0	37.5	17.0

#### Material:

Aluminium Alloy

#### Test Specification:

Engineering Recommendation C79 / IEC 1238-1.

#### Fitting instructions:

1. Strip insulation from each core equal to the depth of the bore guide + 5mm.
2. Thoroughly abrade exposed conductor cores. (See note).
3. Position the conductor cores within the connector ensuring they are fully located.
4. Fit the shear bolts and tighten consecutively one turn at a time until the bolts have sheared.

Note: When jointing copper conductor, wrap the core with the brass gauze supplied prior to installation.



**THORNE &  
DERRICK**  
INTERNATIONAL

**Thorne & Derrick**  
+44 (0) 191 410 4292  
www.powerandcables.com