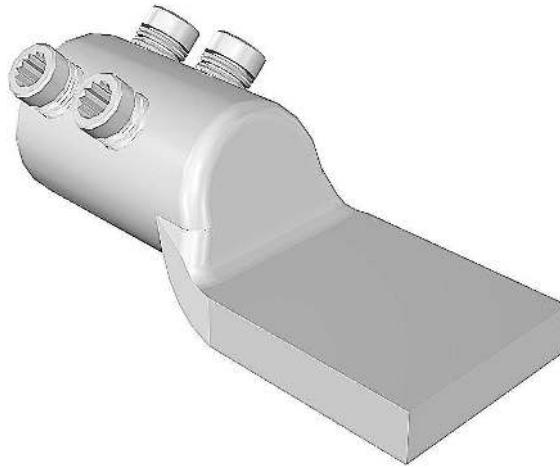


**ML8 Connector****Principle Application:**

Termination of solid/stranded, aluminium/copper circular conductor cores.

**Range:**

| Connector Reference | Core C.S.A. (mm <sup>2</sup> ) |      | Stud Size (mm) |
|---------------------|--------------------------------|------|----------------|
|                     | Min                            | Max  |                |
| ML8                 | 800                            | 1000 | -              |
| ML8-4 x 8           |                                |      | 4 x M8         |
| ML8-4 x 10          |                                |      | 4 x M10        |

Note: For jointing other core configurations/sizes please contact Sicame Technical Dept

The **Hepworth ML8** mechanical lugs are manufactured from an aluminium forging, thereby providing an integral moisture block. The lugs utilise the patented 'universal' range taking shear bolts.

The appropriate tooling is to be used at all times, typical examples shown below.



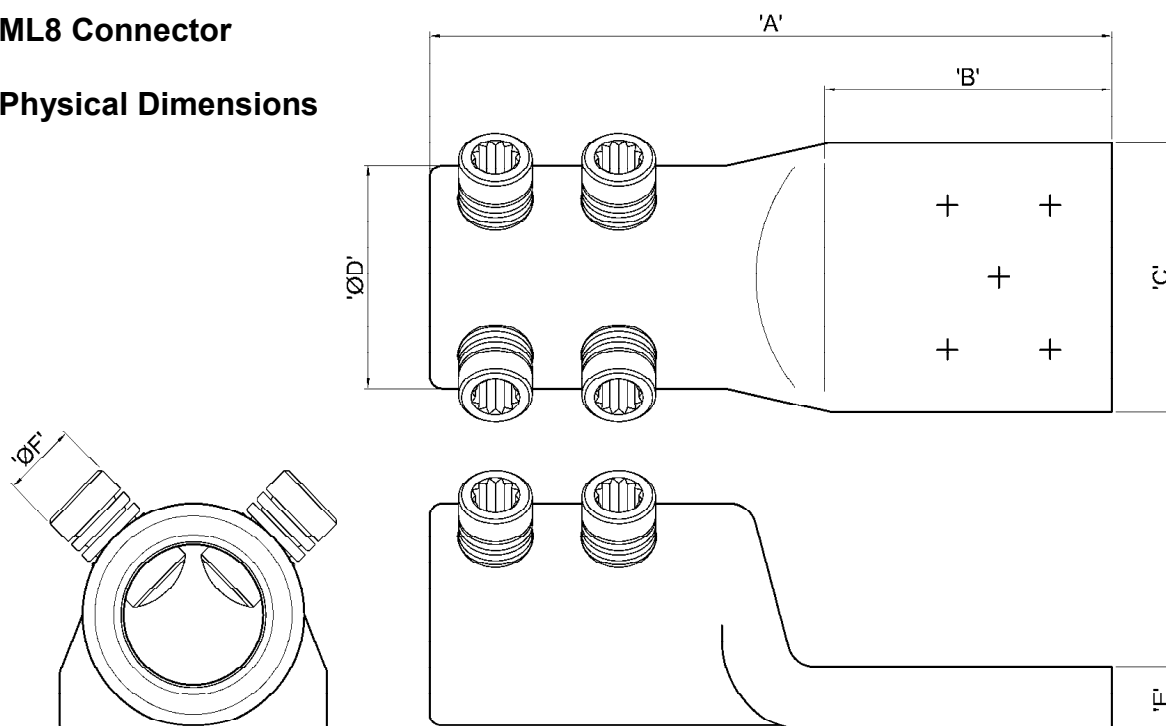
'JTS/7I' Universal Screw Ratchet Tool  
(Insulated)



'JTS/16' Universal Screw Socket  
(17mm A/F)

## ML8 Connector

## Physical Dimensions



| Connector Reference | Dimensions (mm) |     |     |      |     |      | Stud Size (mm) |
|---------------------|-----------------|-----|-----|------|-----|------|----------------|
|                     | 'A'             | 'B' | 'C' | 'ØD' | 'E' | 'ØF' |                |
| ML8                 | 186             | 70  | 63  | 64   | 16  | M18  | -              |
| ML8-4 x 8           | 186             | 70  | 63  | 64   | 16  | M18  | 4 x M8         |
| ML8-4 x 10          | 171             | 55  | 63  | 64   | 16  | M18  | 4 x M10        |

**Material:**

Aluminium Alloy

**Fitting Instructions:**

1. Strip insulation from each core equal to the depth of the bore guide + 5mm.
2. Thoroughly abrade exposed conductors. (See note)
3. Fully insert core within the barrel of the connector.
4. Tighten the universal bolts consecutively one turn at a time until all the heads have sheared.

**Note:**

When jointing copper conductor wrap the supplied brass gauze around the core prior to installation.