

DS DECONTACTOR is a compact and waterproof plug and socket-outlet with integrated switch for industrial purposes.

DS DECONTACTOR complies with the following regulations and standards(a):

European Directives Low Voltage and RoHS (affixing of CE marking), REACH European Regulation, standards IEC/EN 60309-1, IEC/EN 60309-4, IEC/EN 60947-3 (dealing with the load breaking capacities AC-22 and AC-23), UL 1682, UL 2682 (USA), CSA C22.2 N° 182.1-07 (Canada), GB/T 11918.1 (China).

DS DECONTACTOR is certified by the following certification bodies:

LCIE (France), UL (USA), SAA (Australia), VDE (Germany), TR CU (Russia), CSA (Canada), CQC (China).



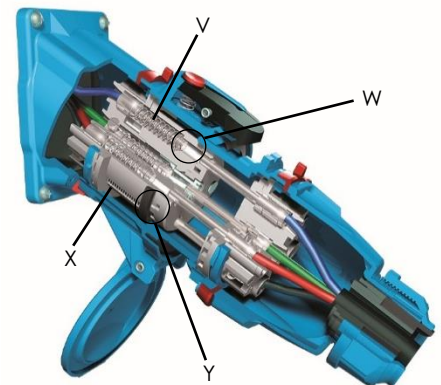
The use of DS DECONTACTOR facilitates the compliance with:

- electrical machinery to the "Machinery" European Directive on isolating device, and to standard EN 60204-1 : Safety of machinery-electrical equipment of machines
- electrical installation:

\* to national regulations relating to the improvement of the safety and health of workers at work in France, Italy, Spain, Belgium,

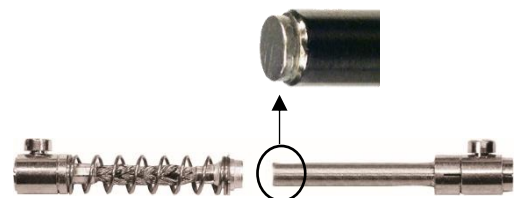
\* to installation standards : IEC 60364 (international), HD 60364 (European), NFPA 70 (USA) and NF C 15-100 (French) or other national transposition of IEC/HD 60364.

General information	DS1	DS3
(b) $I_n$	30 A	50 A
$U_{max}$ (V AC/V DC)	690/1 000	1 000/1 500
(c) Frequency (Hz)	≤ 500	≤ 500
(d) Number of contacts	4P+E	4P+E
(e) Number of keying positions	24	24
Connection (min - max): mm <sup>2</sup>		
Flexible conductors (Cu): main contacts	2.5 - 6	6 - 16
Rigid/stranded conductors (Cu): main contacts	2.5 - 10	10 - 25
Tightening torque - main contacts	1.5 Nm	1.8 Nm
Wiring lugs	Option	Option
Icc: conditional short circuit current (kA)		
with gG fuse	10 kA	10 kA
with RK1 NTD fuse	100 kA	100 kA
<b>Auxiliaries / pilots contacts</b>		
$I_n$	30 A	16 A
$U_{max}$ (V AC/V DC)	500 V	400 V
(f) Number of auxiliaries / pilots contacts	2 aux	4 aux
Connection (min - max): mm <sup>2</sup>		
Flexible wiring	2.5 - 6	1 - 2.5
Stranded wiring	2.5 - 10	1.5 - 4
Tightening torque	1.5 Nm	0.8 Nm
<b>Used as connector according to IEC/EN 61984: In</b>	30 A	50 A
$U_{max}$	690 V AC	1000 V AC
	1000 V DC	1500 V DC
<b>Breaking as plug and socket-outlet according to IEC/EN 60309-1</b>		
(g) $I_n$ (A) / $U_{max}$ (V AC)	30 - 690	50 - 690
<b>Breaking as switch according to IEC/EN 60947-3</b>		
(g) Category AC-22A: $I_n$ (A) - $U_{max}$ (V AC)	32 - 690	40 - 690
(g) Category AC-23A: $I_n$ (A) - $U_{max}$ (V AC)	32 - 480	50 - 400
<b>Breaking as plug and socket-outlet according to UL 2682</b>		
Power: HP	15	25
<b>Increase of DC load-breaking capacity (contacts in series)</b>	Option	Option
<b>Number of operations</b>		
According to IEC/EN 60309-1 : $\cos(\Phi)$ 0,6	2 000	2 000
According to UL 2682 : $\cos(\Phi)$ 0,75	6 000	6 000
<b>Isolating distance</b>	8 mm	13 mm
<b>Thermal features</b>		
Temperature of use mini/maxi (°C)	-40/+60 °C	-40/+60 °C
Storage temperature mini/max: (°C)	-40/+80 °C	-40/+80 °C
Maximal temperature rise (Kmax):	38 K	30 K
Time constant (to reach 63 % of Kmax)	21mn	23 mn



V : Contact spring  
X : Ejection spring

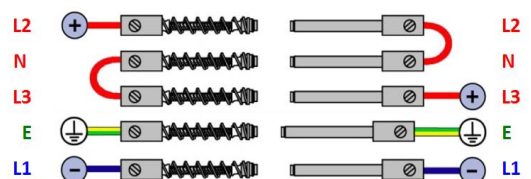
W : Arc chamber  
Y : Ejection ring



Contacts with silver nickel alloy tips (Ag/Ni : 85/15)



Spring assisted terminal:  
Stainless steel ring



Contacts in series

### Mechanical features

- (h) IP: connected device
- IP: lid/cap closed
- IP: socket-outlet with lid/cap opened

- (i) IK
- Retaining/releasing device
- (j) Casing

Standard color  
Other colors

- Vibrations resistance
- Resistance to chemical agents
- Protection against UV (according to UL 746C or equivalent)
- Salt mist resistance
- Screws and bolts
- Weight of inlet without accessory (≈)
- Weight of socket-outlet without accessory (≈)

### Main options

- Socket-outlet opening up to 180°
- Self-returning lid

- Inlet cap
- Self-returning inlet lid
- Locking / padlocking
- Automatic self-ejection
- Larger release button ( "STOP" )
- Finger draw plates
- Industrial-domestic adapter

### Mounting accessories

- Poly sleeve: angle (°) 30/70 30/70
- Metal sleeve: angle (°) 0/30 0/30/70
- Poly box: angle (°) 30 30
- Metal box: angle (°) 20 20
- Poly box + poly sleeve: angle (°) 70 70
- Metal box + poly sleeve: angle (°) 30 30
- Metal box + metal sleeve: angle (°) 0/30 0/30/70
- Poly straight handle with built-in cable gland: range take (mm) 5 - 21 10 - 30
- Threaded poly straight handle M20 - M40 M20 - M40
- Threaded metal straight handle M20 - M32 M20 - M40
- Poly straight handle + separated poly cable gland: range take (mm) 5 - 32 9 - 32
- Metal straight handle + separated metal cable gland: range take (mm) 7 - 23 7 - 32

### Spare parts

- Inlet or socket-outlet interior moulding ✓ ✓
- Inlet or socket-outlet contacts ✓ ✓
- Inlet or socket-outlet colored gasket ✓ ✓
- Inlet or socket-outlet casing ✓ ✓
- Socket-outlet casing gasket ✓ ✓

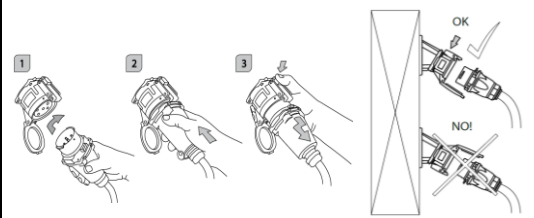
Catalog: [Web link](#)

- | DS1                   | DS3  |
|-----------------------|------|
| IP54                  | IP54 |
| IP55                  | IP55 |
| IP4X - Safety shutter |      |

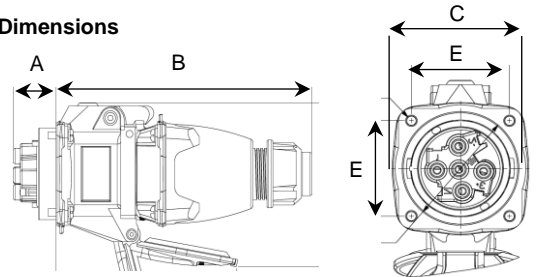
- |                    |         |
|--------------------|---------|
| IK09               | IK09    |
| Red release button |         |
| GRP (poly)         |         |
| MARECHAL® Blue     |         |
| On request         |         |
| ✓                  | ✓       |
| Contact us         |         |
| f1                 | f1      |
| > 50 000 h         |         |
| Stainless steel    |         |
| 0.15 kg            | 0.20 kg |
| 0.26 kg            | 0.35 kg |

- | Included | Included |
|----------|----------|
| IP55     | IP55     |

- |           |           |
|-----------|-----------|
| IP66/IP67 | IP66/IP67 |
| IP55      | IP55      |
| ✓         | ✓         |
| ✓         | ✓         |
| ✓         | ✓         |
| ✓         | ✓         |
| ✓         | ✓         |

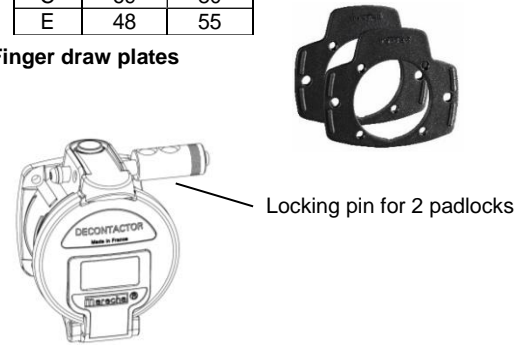


### Dimensions

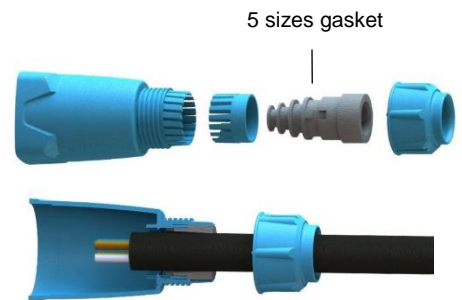


mm	DS1	DS3
A	15	17
B	166	179
C	69	80
E	48	55

### Finger draw plates



### Poly straight handle with built-in cable gland



- (a) European Regulation REACH: registration, evaluation, authorisation and restriction of chemicals
  - IEC/EN 60309-1 : "Plugs, socket-outlets and couplers for industrial purposes – Part 1: General requirements"
  - IEC/EN 60309-4 : "Plugs, socket-outlets and couplers for industrial purposes – Part 4: Switched socket-outlets and connectors with or without interlock"
  - IEC/EN 60947-3 : "Low-voltage switchgear and controlgear – Part 3: Switches, disconnectors, switch-disconnectors and fuse-combination units"
  - IEC/EN 61984 : "Connectors – Safety requirements and tests"
  - UL 1682 : "Plugs, Receptacles, and Cable Connectors of the Pin and Sleeve Type"
  - UL 2682 : "Outline of Investigation for Switch-Rated Plugs and Receptacles"
  - CSA C22,2 No 182,1-07 : "Plugs, Receptacles, and Cable Connectors of the Pin and Sleeve Type"
  - GB/T 11918.1 : "Plugs, socket-outlets and couplers for industrial purposes – Part 1: General requirements"
- (b) In : Rated current as defined by the manufacturer
- (c) Other frequency: contact us
- (d) Contacts with silver-nickel tips (Ag/Ni 85/15)
- (e) Number of voltage / frequency / grid, keying positions
- (f) Auxiliaries contacts are located on the plug and socket-outlet sides. Pilot contacts are only located on the socket-outlet side.
- (g) For direct current applications : contact us
- (h) IP : Degrees of protection provided by enclosures (IEC/EN 60529)
- (i) IK : Degrees of protection provided by enclosures against mechanical impacts (IEC/EN 62262)
- (j) GRP : Glass-reinforced technical plastic