

DS2 DECONTACTOR is a compact and waterproof plug and socket-outlet with integral switch for industrial purposes.  
DS4 is a high power connector.

DS2 DECONTACTOR and DS4 comply with the following regulations and standards(a) :

European Directives Low Voltage and RoHS (affixing of CE marking), REACH European Regulation.

DS2 complies with IEC/EN 60309-1, IEC/EN 60309-4, IEC/EN 60947-3 (dealing with the load breaking capacities AC-22 and AC-23), UL 1682, UL 2682 (USA), CSA C22.2 N° 182.1-07 (Canada) standards, MIL-S-901D (sea military specifications), GB/T 11918.1, GB/T 11918.2 (China).

DS2 DECONTACTOR is certified by the following certification bodies:

LCIE (France), UL (USA), SAA (Australia), VDE (Germany), TR CU (Russia), CSA (Canada), Bureau Veritas Marine, MIL-S-901D (Military), CQC (China).



The use of DS2 DECONTACTOR facilitates the compliance with:

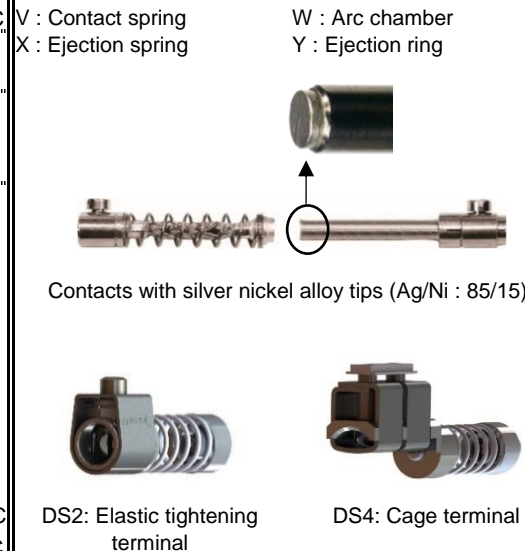
- electrical machinery to the "Machinery" European Directive on isolating device, and to standard EN 60204-1 : Safety of machinery-electrical equipment of machines

- electrical installation:

\* to national regulations relating to the improvement of the safety and health of workers at work in France, Italy, Spain, Belgium,

\* to installation standards : IEC 60364 (international), HD 60364 (European), NFPA 70 (USA) and NF C 15-100 (French) or other national transposition of IEC/HD 60364.

General information	DS2	DS4	DS2	DS4
(b) $I_n$	250 A	400 A		
$U_{max}$ (V AC/ DC)	1 000/1 500	1 000/1 500		
(c) Frequency (Hz)	≤ 500	≤ 500		
(d) Number of contacts	4P+E	3P+E		
(e) Number of keying positions	12	12		
Connection (min - max): mm <sup>2</sup>				
Flexible conductors (Cu): main contacts	70 - 95	95 - 150		
Rigid/stranded conductors (Cu): main contacts	70 - 120	95 - 185		
Tightening torque - main contacts	15 Nm	10 Nm		
Wiring lugs	Option	Option		
Icc: conditional short circuit current (kA)				
with gG fuse	10 kA			
with RK1 NTD fuse	10 kA			
<b>Auxiliaries / pilots contacts</b>				
$I_n$	5 A	5 A		
$U_{max}$ (V AC/ DC)	400 V	400 V		
(f) Number of auxiliaries / pilots contacts	6 aux	2 pil		
Connection (min - max): mm <sup>2</sup>				
Flexible wiring	2.2	2.2		
Tightening torque	Pre-wired	Pre-wired		
<b>Used as connector according to IEC/EN 61984: In</b>	250 A	400 A		
$U_{max}$	1000 V AC	1000 V AC		
	1500 V DC	1500 V DC		
<b>Breaking as plug and socket-outlet according to IEC/EN 60309-1</b>				
(g) $I_n$ (A) / $U_{max}$ (V AC)	250 - 500			
<b>Breaking as switch according to IEC/EN 60947-3</b>				
(g) Category AC-22A: $I_e$ (A) - $U_e$ (V AC)	250 - 400			
(g) Category AC-23A: $I_e$ (A) - $U_e$ (V AC)	160 - 440			
<b>Breaking as plug and socket-outlet according to UL 2682</b>				
Power: HP	100			
<b>Increase of DC load-breaking capacity (contacts in series)</b>	Option			
<b>Number of operations</b>				
According to IEC/EN 60309-1 : Cos(Φ) 0,8	250			
According to UL 2682 : Cos(Φ) 0,75	6 000			
Mechanical	6 000	500		
<b>Isolating distance</b>	20 mm			
<b>Thermal features</b>				
Temperature of use mini/maxi (°C)	-40/+60 °C	-40/+60 °C		
Storage temperature mini/max: (°C)	-40/+80 °C	-40/+80 °C		



**Mechanical features**

- (h) IP: connected device
- (h) IP: lid/cap closed
- (h) IP: socket-outlet with lid/cap opened

- (i) IK
- Retaining/releasing device
- Casing

- Vibrations resistance
- Resistance to chemical agents
- Protection against UV (according to UL 746C or equivalent)
- Salt mist resistance
- Screws and bolts
- Weight of inlet without accessory (≈)
- Weight of socket-outlet without accessory (≈)

**Main options**

- Automatic self-ejection
- Self-returning lid
- Inlet cap
- Switchgear control module
- Locking / padlocking
- Larger release button ( "STOP" )
- (i) Electromagnetic compatibility (EMC)
- Automatic self-ejection

**Mounting accessories**

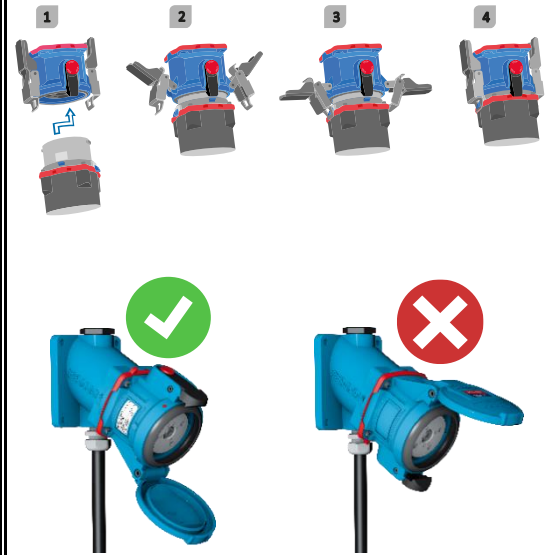
- Metal sleeve: angle (°)
- Metal box: angle (°)
- Poly straight handle with built-in cable gland: range take (mm)
- Elastomer straight handle with built-in cable gland: range take (mm)
- Threaded poly straight handle
- Threaded metal straight handle
- Poly straight handle + separated poly cable gland: range take (mm)
- Metal straight handle with built-in cable gland: range take (mm)
- Spacer: thickness (mm)

**Spare parts**

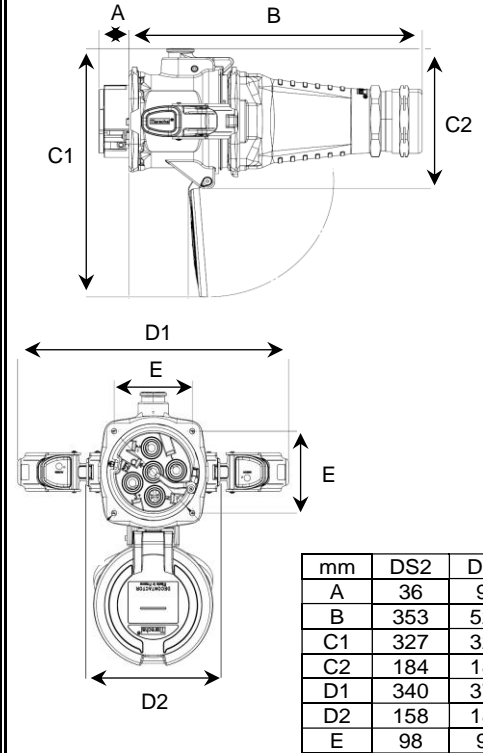
- Inlet or socket-outlet interior moulding
- Inlet or socket-outlet contacts
- Inlet or socket-outlet colored gasket
- Inlet or socket-outlet casing
- Socket-outlet casing gasket

Catalog: [Web link](#)

	DS2	DS4
IP66/IP67	IP66/IP67	IP66/IP67
IP66/IP67	IP66/IP67	IP66/IP67
IP3X - Safety shutter		IP2X
IK10	IK10	IK10
Release button		Aluminium alloy
Standard color	MARECHAL® Blue	Grey
Other colors	On request	
	✓	✓
	✓	✓
	NA	NA
		Contact us
	Stainless steel	
	2.2 kg	3.4 kg
	3 kg	4.9 kg



**Dimensions**



- (a) European Regulation REACH: registration, evaluation, authorisation and restriction of chemicals
- IEC/EN 60309-1 : "Plugs, socket-outlets and couplers for industrial purposes – Part 1: General requirements"
- IEC/EN 60309-4 : "Plugs, socket-outlets and couplers for industrial purposes – Part 4: Switched socket-outlets and connectors with or without interlock"
- IEC/EN 60947-3 : "Low-voltage switchgear and controlgear – Part 3: Switches, disconnectors, switch-disconnectors and fuse-combination units"
- IEC/EN 61984 : "Connectors – Safety requirements and tests"
- UL 1682 : "Plugs, Receptacles, and Cable Connectors of the Pin and Sleeve Type"
- UL 2682 : "Outline of Investigation for Switch-Rated Plugs and Receptacles"
- CSA C22,2 No 182,1-07 : "Plugs, Receptacles, and Cable Connectors of the Pin and Sleeve Type"
- GB/T 11918.1 : "Plugs, socket-outlets and couplers for industrial purposes – Part 1: General requirements"
- (b) In : Rated current as defined by the manufacturer
- (c) Other frequency: contact us
- (d) Contacts with silver-nickel tips (Ag/Ni 85/15)
- (e) Number of voltage / frequency / grid, keying positions
- (f) Auxiliaries contacts are located on the plug and socket-outlet sides. Pilot contacts are only located on the socket-outlet side.
- (g) For direct current applications : contact us
- (h) IP : Degrees of protection provided by enclosures (IEC/EN 60529)
- (i) IK : Degrees of protection provided by enclosures against mechanical impacts (IEC/EN 62262)
- (j) Suitable for EMC environments: use of metallic housings and accessories, and cable gland with shielding recovery.